



BOB'S SPACE RACERS, INC.

TECH TIPS

Gear It Up™ Arcade Game Marquee Spinner Adjustment

March 2015

Problem:

1. The Marquee Spinner does not line up properly or “slips” during gameplay.
2. The Marquee Spinner makes contact with the front marquee Plexiglas.

Solution:

Adjust the set collar for the marquee spinner for the GEAR IT UP™ arcade game:

Procedures:

1. Remove the marquee from the top of the game.
2. Remove the spinner carriage by loosening the four rear bolts on the marquee and lift up on the spinner carriage.
3. Detach the two wiring harnesses connecting the spinner carriage.
4. Lay the spinner carriage on a clean, flat surface with the spinner facing up.
5. Remove the three bolts on the face of the spinner. *(See Figure 1)*
6. Remove the four screws securing white backplate located behind the Spinner. *(See Figure 2)*
7. Without removing the sensor or sensor wiring harness, lay the white backplate over to expose the spinner set collar. *(See Figure 3)*



Figure 1: Removing the spinner face

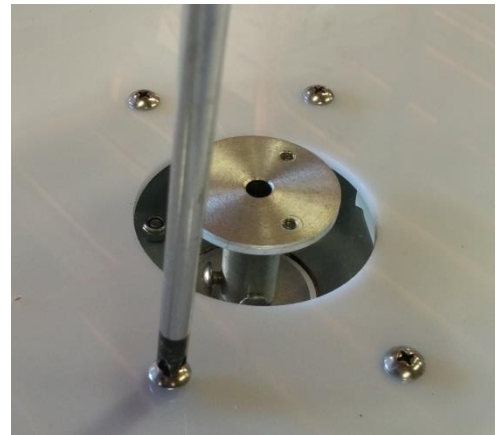


Figure 2: Removing the Spinner Backplate



Figure 3: Laying the white backplate over

Tech Tips: Gear It Up™ Arcade Game – Marquee Spinner Adjustment (Continued)

Problem: The Marquee Spinner does not line up properly or “slips” during gameplay due to a loose set collar on the motor shaft.

-or-

Problem: The Marquee Spinner makes contact with the front marquee Plexiglas due to the set collar is set too far from the motor.

Procedure for Problems 1 and 2:

1. Follow previous Steps 1-7 to gain access to the Spinner Set Collar.
2. Remove the set collar by loosening the two set screws on the side of the set collar. (See Figure 4)
3. Pull the set collar off and note the position of the two flat slots on the motor shaft. (See Figure 5)
4. Place the set collar back onto the motor shaft, lining up the screw heads with the flat slots on the motor shaft.
5. Position the bottom of the set collar to 1/16” from the motor face and tighten the screws so that the screws make contact with both slots and are firmly secured. (See Figure 6)
6. Replace the white backplate and spinner face.
7. Reattach the wiring harness from the spinner carriage and marquee.
8. Replace the spinner carriage on the back of the marquee and tighten the four screws.
9. Replace the marquee to the top of the game.

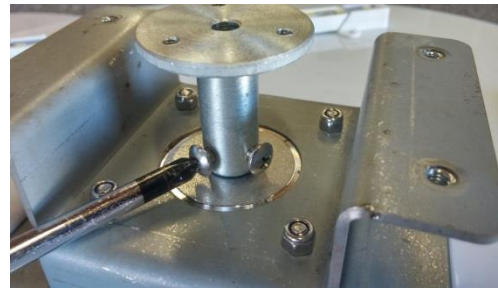


Figure 4: Removing the set collar

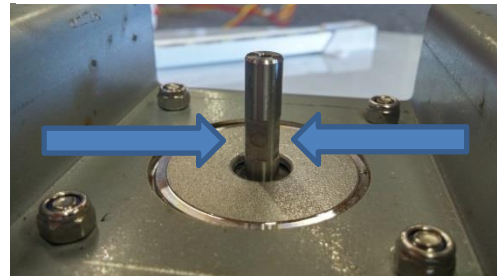


Figure 5: Flat surfaces on motor shaft

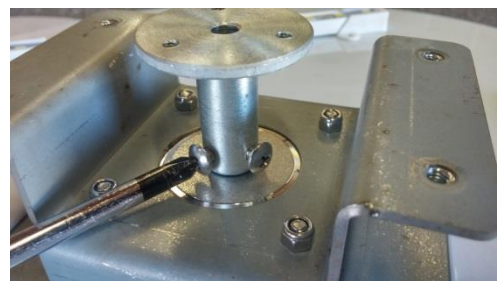


Figure 6: Replacing the set collar on the motor shaft